

WARDS
SEA KING

**OUTBOARD
MOTOR**

PARTS CATALOG

1973

MW-71

35

B.I.A. CERTIFIED BRAKE H.P. AT 4,750 R.P.M.

**MODEL
VWB-27435**

Printed in U.S.A.

10/72

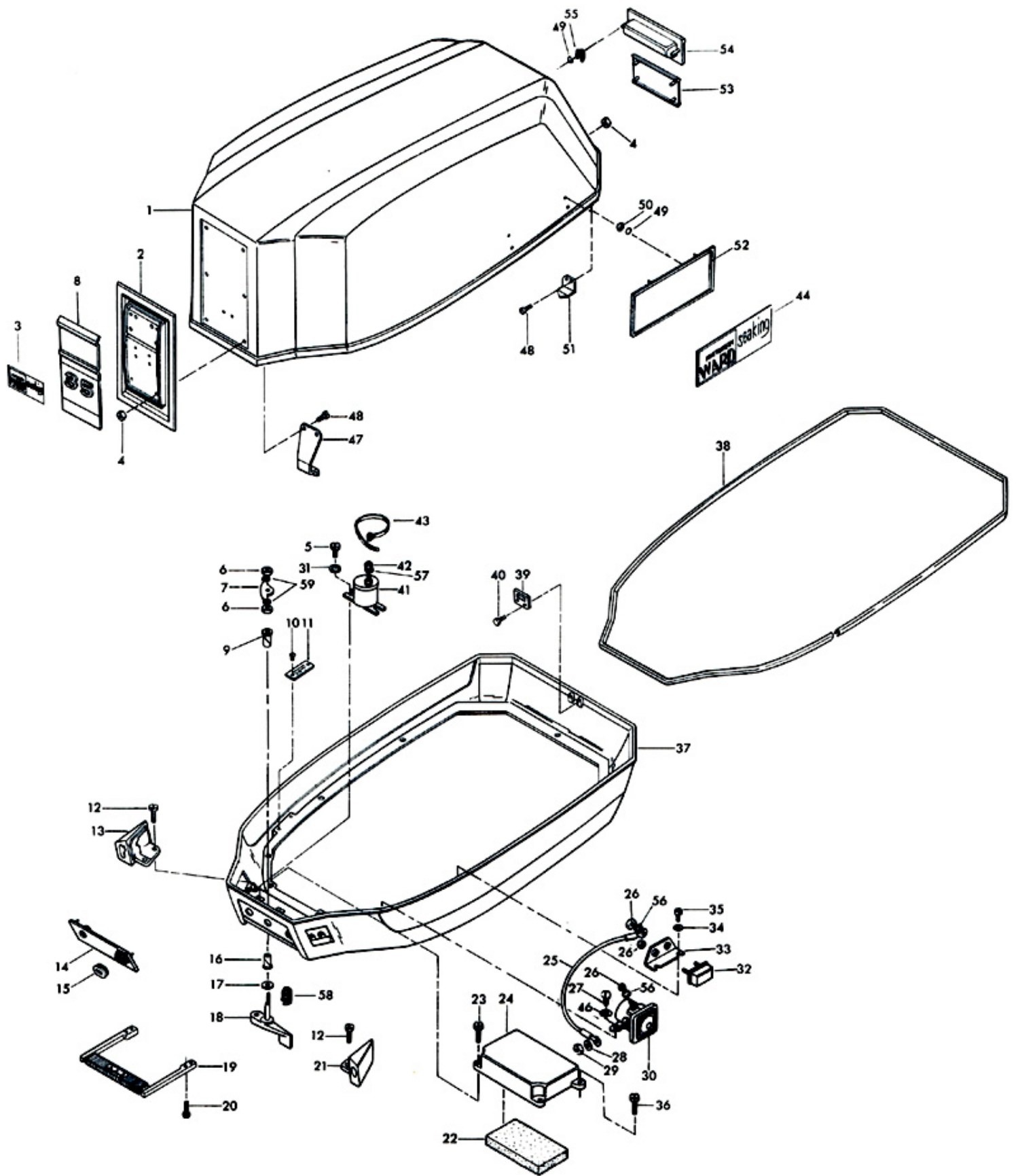
SEA KING—SOLD EXCLUSIVELY BY **MONTGOMERY WARD**

Engine Cover and Support Plate

ILLUS. NO.	PART NO.	QTY.	DESCRIPTION
1	S452712	1	Engine cover w/tilt handle, fasteners and retainers
2	402512-1	1	Plate, front
3	A452512	1	Insert, front plate
4	7011	4	Elastic stop nut, 10 - 24
5	1993	2	Hex hd screw, 1/4 - 20 x 5/8
6	1518	2	Hex nut, S. S., 5/16 - 18
7	89777-1	1	Latch cam
8	452893	1	Plate, insert "35"
9	307818	1	Bearing, latch shaft
10	1293	2	Drive screw, 2 x 3/16
11	A197395-3	1	Plate, identification
12	1733	4	Pan hd screw, 10 - 24 x 9/16
13	402189	1	Bushing, cable entry
14	312888	1	Panel, support plate
15	289899	1	Grommet, battery cable entry
16	307818	1	Bearing, latch shaft
17	1987	1	Plain washer
18	A312763	1	Cover latch handle w/shaft
19	312647	1	Carrying handle
20	1199	4	Hex hd machine screw, 1/4 - 20 x 1
21	402477	1	Bushing, electric cable entry
22	307860	1	Intake silencer
23	1198	2	Hex hd machine screw, 1/4 - 20 x 1
24	A307779	1	Baffle, air intake
25	307683	1	Wire, circuit breaker
26	1513	5	Hex nut, 10 - 32
27	1238	8	Hex hd machine screw, 1/4 - 20 x 3/4
28	8096	2	Lockwasher
29	1615	2	Hex nut, S. S., 5/16 - 24
30	177917	1	Starter relay
31	8083	2	Spring lockwasher
32	91460-2	1	Circuit breaker
33	91446-1	1	Circuit breaker bracket
34	8011	2	Plain washer
35	1733	2	Pan hd screw, 10 - 24 x 9/16
36	1914	2	Hex hd machine screw, 1/4 - 20 x 3/4
37	312038	1	Support plate
38	309756	1	Support plate packing
39	312774	1	Bracket, rear retainer
40	1481	2	Hex screw, 1/4 - 20 x 9/16
41	A289924-1	1	Choke solenoid
42	1647	1	Hex nut, 8 - 32
43	1877	1	Ty-rap
44	A451892	2	Insert, side plate
46	8094	1	Plain washer
47	A312788-1	1	Engine cover retainer, forward w/screw and nuts
48	1475	4	Fill hd screw, S. S., 10 - 24 x 1/2
49	85735	27	Seal
50	1753	27	Fastener
51	A312480	1	Engine cover retainer w/screws and nuts
52	451392	2	Plate, side
53	452180	1	Trim, rear "35"
54	401269-1	1	Tilt handle
55	9037	2	Fastener
56	1975	3	Spring lockwasher
57	8056	1	Spring lockwasher
58	309300	1	Spring
59	8096	2	Spring lockwasher
	452385	1	Decal, "Electric" (not shown)

NOTE

To obtain identification plate, order part number A197395-3. Order for identification plate must be accompanied by a notarized statement from the dealer, customer and statement from a law enforcement agency verifying that the plate is lost or damaged beyond repair. This statement must also include name and address of owner and model and serial number of motor.



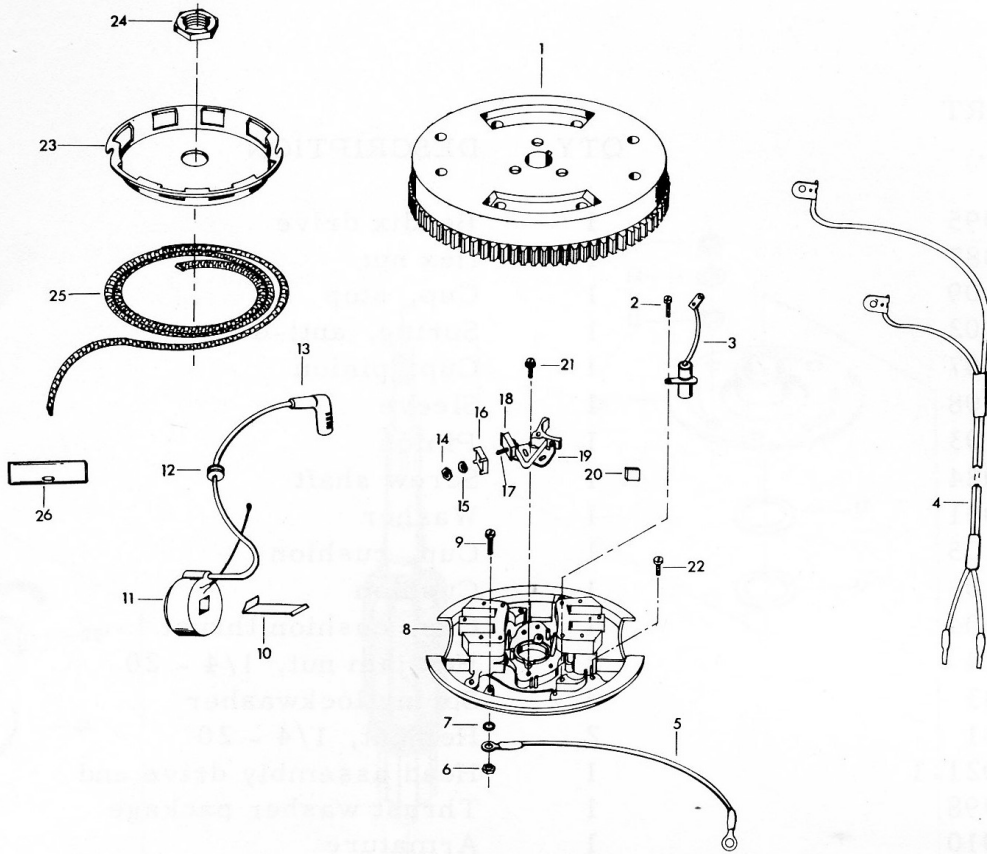
Electrical and Remote Components

ILLUS. NO.	PART NO.	QTY.	DESCRIPTION
1	1920	1	Hex nut, 5/8 - 18
2	93097-5	1	Flywheel and starter gear
3	12227	2	Cam wiper felt
4	12014	6	Breaker point and condenser mounting screw, 8 - 32 x 3/8
5	12044	2	Breaker point set
6	12050	2	Grommet
7	12057	2	Coil w/lead wire, sparkie and grommet
8	12053	2	Coil retaining clip
9	12016	1	Cable clip screw, 8 - 32 x 1/2
10	12246	1	Cable clip
11	92498	1	Key
12	A27232	1	Starter rope w/handle
13	58685-2	1	Connector, shift cable
14	A58976-1	1	Connector, throttle cable
15	93002	1	Cam
16	296898	2	Male slide terminal
17	12059	1	Primary terminal wire
18	S338095-2	1	Stator plate
19	460664	1	Wire, stator ground
20	12023	2	Lamination screw, 10 - 24 x 1
21	1926	2	Lamination screw, 8 - 32 x 7/8
22	12042-1	2	Condenser w/mount
23	1300	2	Breaker arm terminal screw, 6 - 32 x 3/8
24	1239	1	Hex hd screw, 1/4 - 20 x 5/8
25	92446	1	Clamp
26	1857	1	Hex cap screw, 5/16 - 18 x 5/8
27	381896-4	1	Battery cable
28	71H26	2	Battery terminal (Accessory Item)
29	1020	1	Cotter pin
30	111694-1	1	Steering bracket latch
31	137	1	Remote steering bracket w/latch and pins
32	8535	1	Spring pin
33	A296918-1	1	Ignition switch w/keys and mounting nuts
34	1280	5	Pan hd screw, 8 - 32 x 1/4
35	307317	1	Clip, terminal block ground
36	85843	1	Electric control cable
37	1974	2	Pan hd screw, 10 - 24 x 5/8
38	289497-1	1	Terminal block
39	307744-1	1	Wiring harness
40	8096	1	Spring lockwasher
	K-750-1	2	Sparkie kit (not shown)
	452398	1	Decal, wiring (not shown)
		1	Magneto complete, order component parts

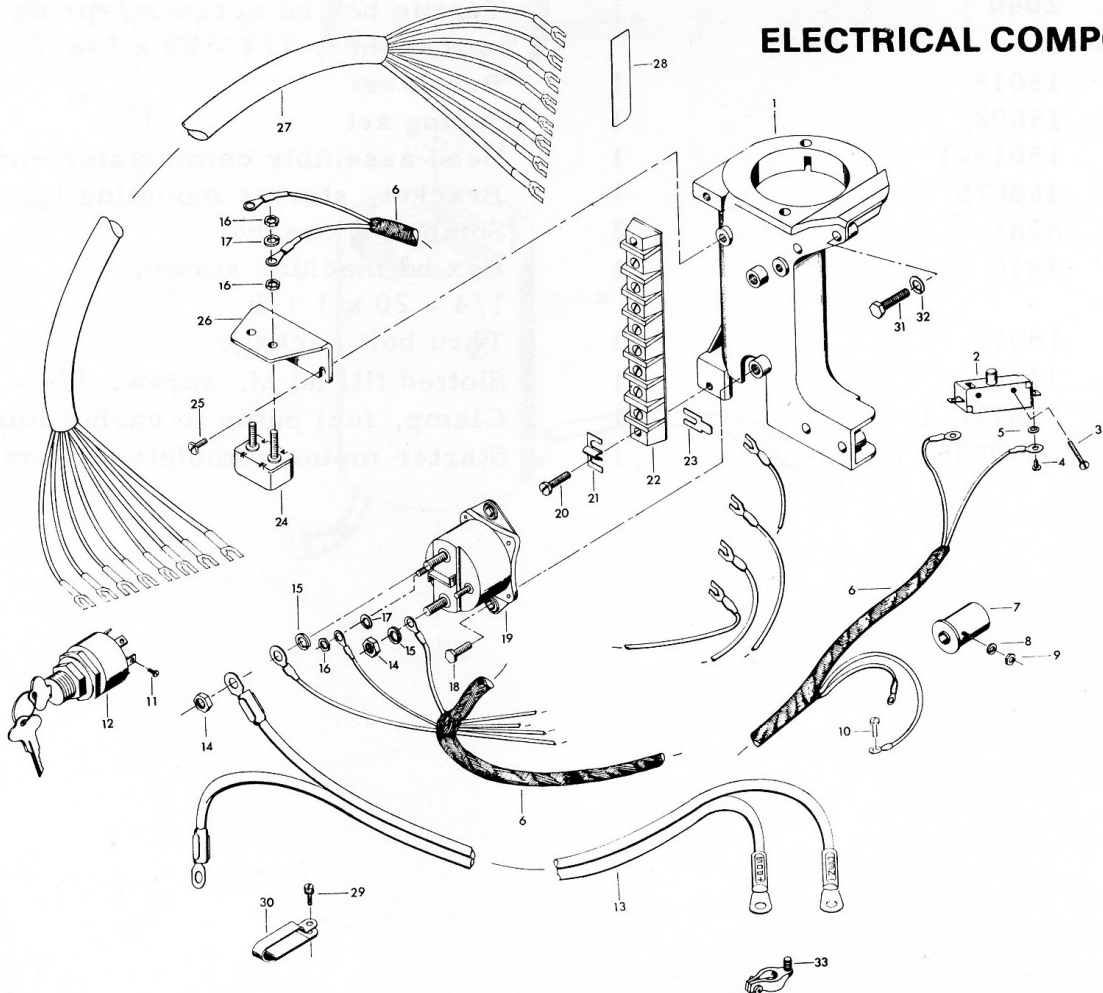
Starter

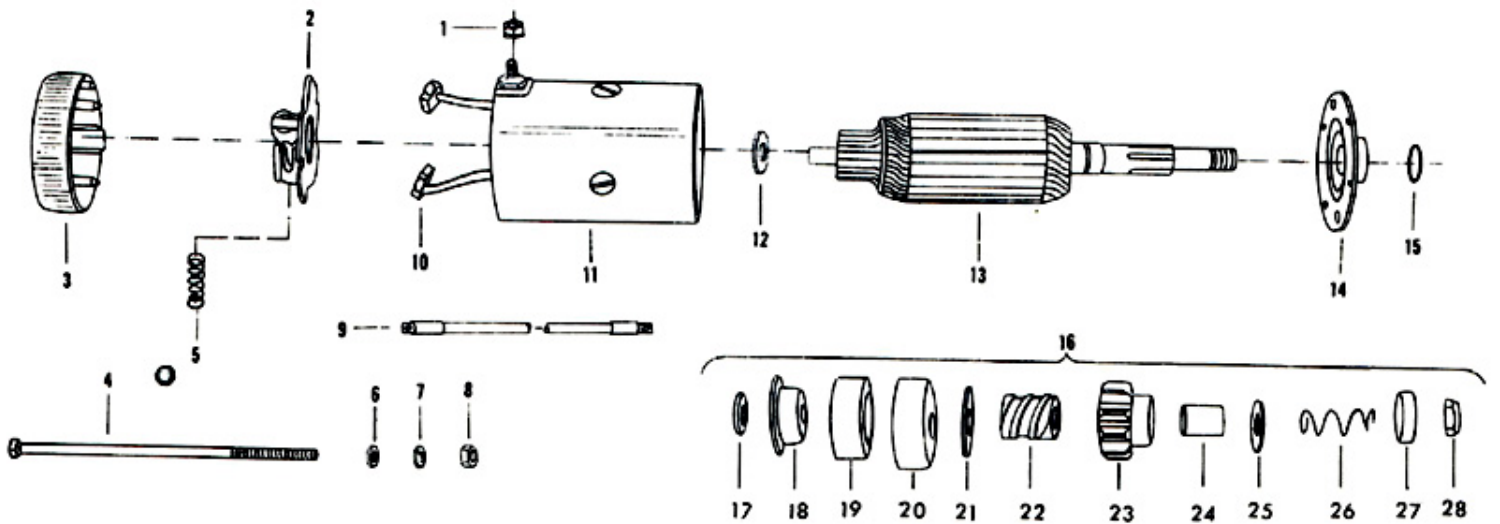
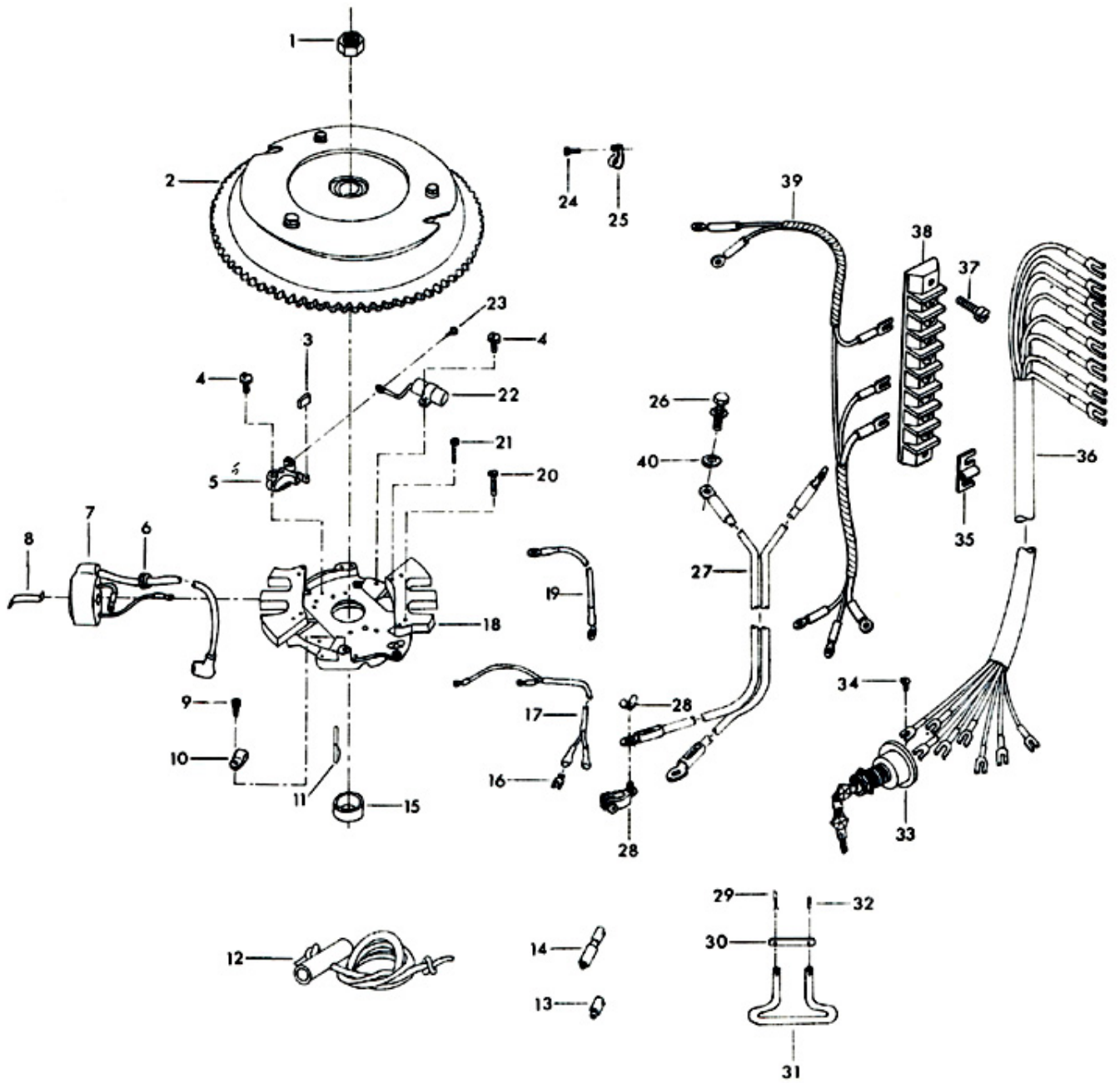
ILLUS. NO.	PART NO.	QTY.	DESCRIPTION
1	15072	1	Hex lock nut, 1/4 - 20
2	15038	1	Brush plate and holder
3	15037	1	Head assembly, commutator end
4	15036	2	Thru bolt package
5	15034	1	Spring set
6	8028	2	Plain washer
7	8060	2	Lockwasher
8	1514	2	Hex nut, 1/4 - 20
9	307908	1	Starter lead
10	15042	1	Brush set
11	15043	1	Frame and field assembly
12	15073	1	Thrust washer package
13	15044	1	Armature
14	15021-1	1	Head assembly, drive end
15	15000	1	"O" ring seal
16	15013	1	Bendix drive
17	15092	1	Spacer
18	15093	1	Washer
19	15082	1	Cushion
20	15083	1	Cup
21	15091	1	Washer
22	15084	1	Screw shaft
23	15090	1	Pinion
24	15085	1	Sleeve
25	15089	1	Washer
26	15088	1	Spring
27	15086	1	Stop
28	15087	1	Nut
.	A201955	1	Starter motor complete

MAGNETO



ELECTRICAL COMPONENTS





Carburetor

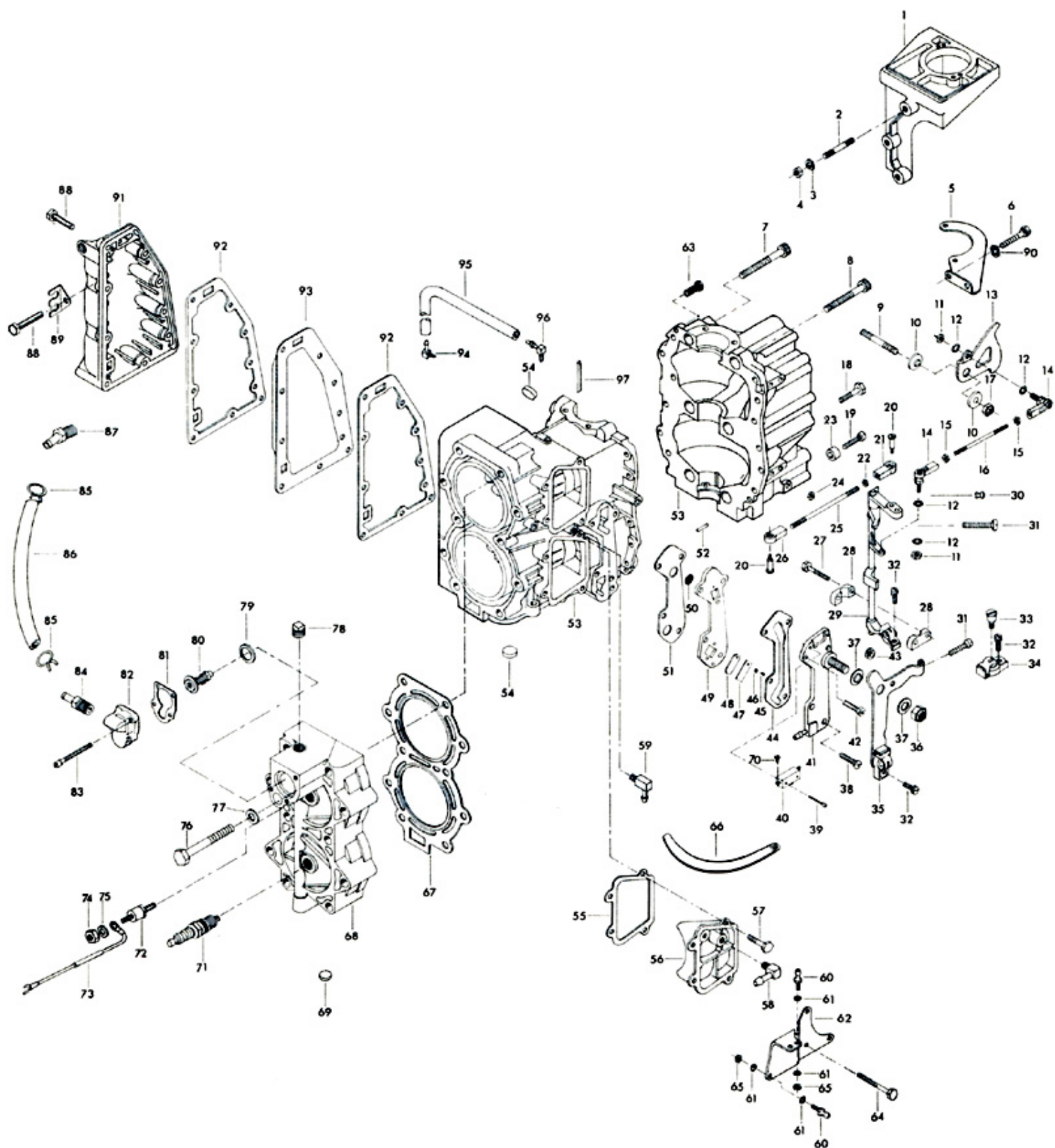
ILLUS. NO.	PART NO.	QTY.	DESCRIPTION
1	* 010588	1	Body channel cup plug
2	03804	1	Throttle shaft position retaining screw washer
3	06396	1	Throttle shaft position retaining screw lockwasher
4	06393	1	Throttle shaft position retaining screw
5	016383	1	Choke shaft and lever
6	184579	3	Seal, choke arm swivel
7	184033-1	1	Swivel, choke rod
8	1059	1	Fill hd screw, 6 - 32 x 1/4
8A	452925	1	Rod, choke solenoid
9	391926-1	1	Choke solenoid plunger
9A	2033	1	Groove pin
10	8088	1	Plain washer
11	1014	1	Cotter pin
12	* 016385	1	Choke shaft return spring
13	012251	1	Choke relief valve
14	* 011103	1	Idle mixture screw spring
15	* 013946	1	Idle mixture screw
16	010280	2	Choke shutter retaining screw and lockwasher
17	012250	1	Choke shutter
18	010883	1	Choke relief valve spring
19	010165	1	Inlet seat gasket
20	* 010790	1	Inlet needle, seat and gasket
21	* 013944	1	Float lever pin
22	10019	1	Repair parts kit, includes all items marked with an asterisk (*)
23	015623	1	Fuel bowl gasket
24	02510	2	Fuel bowl retaining screw gasket
25	013552	1	Fuel bowl
26	013945	1	Fuel bowl retaining screw
27	013554	1	Float
28	* 016251	1	Main nozzle
29	* 015406	1	Main fuel jet (.090) (Standard)
30	1515	2	Hex nut, 5/16 - 18
31	* 10000	1	Gasket set
32	333316	1	Throttle roller shaft
33	92759	1	Roller
34	015728	1	Throttle shaft and lever
35	1997	1	Stop nut, 8 - 32
36	* 014292	1	Throttle shaft return spring
37	016119	1	Throttle shutter
38	* 08942	2	Throttle shutter retaining screw and lockwasher
39	40906-1	1	Flange gasket
40	* 04326	1	Body channel welch plug
41	84314-2	1	Carburetor elbow
	433061-2	1	Carburetor complete (WB17C) (not shown)

OPTIONAL SIZE MAIN FUEL JET
(Use Only At Altitudes Indicated)

	<u>Sea Level-1250 Ft.</u>	<u>1250-3750 Ft.</u>	<u>3750-6250 Ft.</u>	<u>6250 and Up</u>
Size	.090	.088	.086	.084
Part No.	015406	013193	013949	014302

Power Head

ILLUS. NO.	PART NO.	QTY.	DESCRIPTION	ILLUS. NO.	PART NO.	QTY.	DESCRIPTION
1	345427-1	1	Starter mounting bracket	52	8559	2	Dowel pin
2	307211	3	Stud	53	A433010-1	1	Cylinder w/crankcase cover, deflector plate and screws
3	8096	3	Spring lockwasher	54	1524	2	Welch plug
4	1515	3	Hex nut, 5/16 - 18	55	40223	2	Transfer port cover gasket
5	433675	1	Starter mounting bracket lower	56	A411222	1	Transfer port cover
6	1993	2	Hex slot hd screw, 1/4 - 20 x 5/8	57	1502	1	Hex slot hd screw, 1/4 - 20 x 5/8
7	1646	1	Hex socket hd cap screw, 3/8 - 16 x 2 1/4	58	84314-2	1	Elbow, fuel line
8	1879	5	Hex socket hd cap screw, 3/8 - 16 x 1 5/8	59	404801	1	Elbow
9	433209	1	Stud, throttle cam	60	98273	2	Rod end connector stud
10	269319	2	Throttle cam bearing	61	8058	4	Internal tooth lockwasher
11	1513	2	Hex nut, 10 - 32	62	A267371-1	1	Connector stud bracket
12	8058	4	Internal tooth lockwasher	63	1922	3	Hex hd screw, 1/4 - 20 x 5/8
13	433192	1	Throttle cam	64	1238	3	Hex slot hd screw, 1/4 - 20 x 3/4
14	A269141-1	2	Ball joint w/bearing	65	1513	2	Hex nut, 10 - 32
15	1513	2	Hex nut, 10 - 32	66	433254	1	Hose
16	85502	1	Throttle link	67	201529-1	1	Cylinder head gasket
17	1910	1	Elastic stop nut, 1/4 - 20	68	2A307518-1	1	Cylinder head w/plug
18	1914	9	Hex slot hd screw, 1/4 - 20 x 3/4	69	1526	1	Welch plug
19	1134	2	Fill hd screw, 8 - 32 x 1 1/8	70	1645	2	Round hd screw, 6 - 32 x 1/4
20	84026	2	Spark control swivel	71	S174227	2	Spark plug (L-4-J)
21	84036	1	Spark control bearing, L. H.	72	A289449-1	1	Thermoswitch
22	1473	1	Hex nut, 10 - 24	73	307104	1	Thermoswitch wire
23	307942-1	2	Bumper	74	1647	1	Hex nut, 8 - 32
24	1770	2	Stop nut, 8 - 32	75	8056	1	Lockwasher
25	269445	1	Spark control link	76	1544	9	Hex hd cap screw, 3/8 - 16 x 2 1/4
26	84035-2	1	Spark control bearing, R. H.	77	8039	10	Plain washer
27	1995	4	Fill hd screw, 10 - 24 x 1	78	328109	1	Pipe plug cylinder head
28	433689	4	Towershaft bearing	79	97504	1	Grommet, thermostat
29	A433838	1	Towershaft w/swivel	80	97068-1	1	Thermostat
30	1727	1	Plastic rivet	81	97067	1	Thermostat cover gasket
31	1969	2	Fill hd screw, 1/4 - 20 x 3/4	82	97066-1	1	Thermostat cover
32	1556	2	Fill hd screw w/lockwasher, 10 - 24 x 3/8	83	1069	3	Fill hd screw, 10 - 24 x 1 1/16
33	405457	2	Pivot screw	84	97275	1	Fitting, thermostat
34	K405020	1	Swivel w/screw and nut	85	97772	2	Clamp
35	A433876	1	Shift arm w/swivel	86	311247	1	Water tube, thermostat
36	7004	1	Stop nut, 3/8 - 16	87	141275	1	Fitting, thermostat
37	269052	2	Shift arm bearing	88	1971	9	Hex hd screw, 1/4 - 20 x 2 1/8
38	1136	2	Flat hd screw, 1/4 - 20 x 1	89	901834	1	Lead wire clip
39	1654	2	Fill hd screw, 6 - 32 x 7/8	90	8083	2	Spring lockwasher
40	84449	1	Switch, neutral interlock	91	A433152	1	Exhaust port cover
41	A433471	1	Cylinder drain cover	92	40154-3	2	Exhaust port plate gasket
42	1198	2	Hex slot hd screw, 1/4 - 20 x 1	93	40151-1	1	Exhaust port plate
43	85610	1	Bearing	94	366314	1	Fitting
44	93472-1	1	Cylinder drain cover gasket	95	S433758	1	Hose w/check valve
45	1286	2	Pan hd screw, 4 - 40 x 3/16	96	A213314-1	1	Elbow w/metering cup
46	8003	2	Plain washer	97	8545	1	Spring pin
47	93920	2	Cylinder drain reed stop		269122-1	1	Crankcase parting line seal (not shown)
48	18160-1	2	Reed, cylinder drain		K747	1	Engine touch-up paint, spray bomb
49	2A433757	1	Cylinder drain reed plate w/reeds, reed stops, screws and screen		K737	1	Blue Enamel
50	93811	2	Screen, cylinder drain reed plate		G1006	1	Engine touch-up paint, spray bomb
51	93748-1	1	Cylinder drain reed plate gasket				Frost White Flat
							Gasket set (not shown)

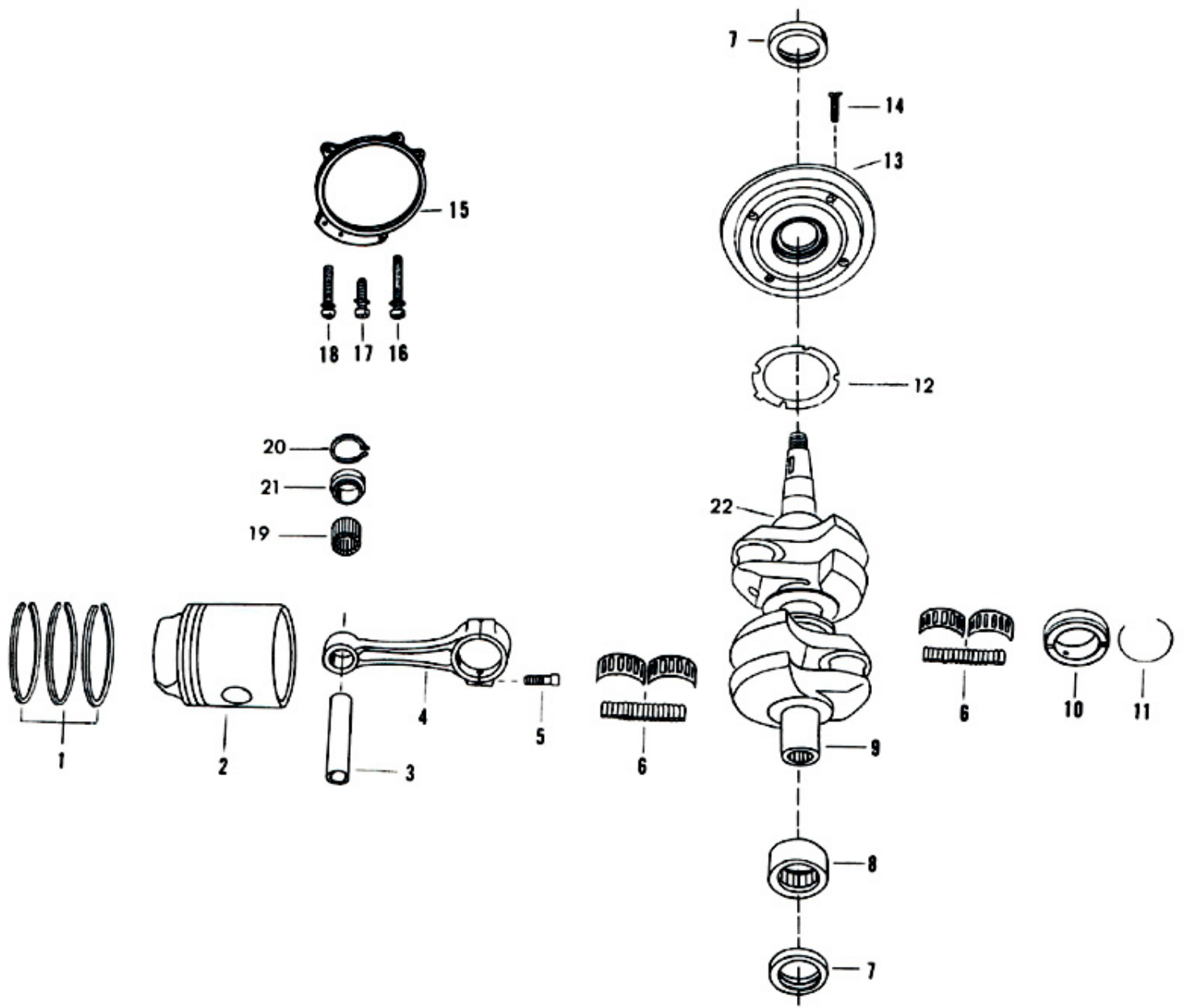


Crankshaft and Piston Group

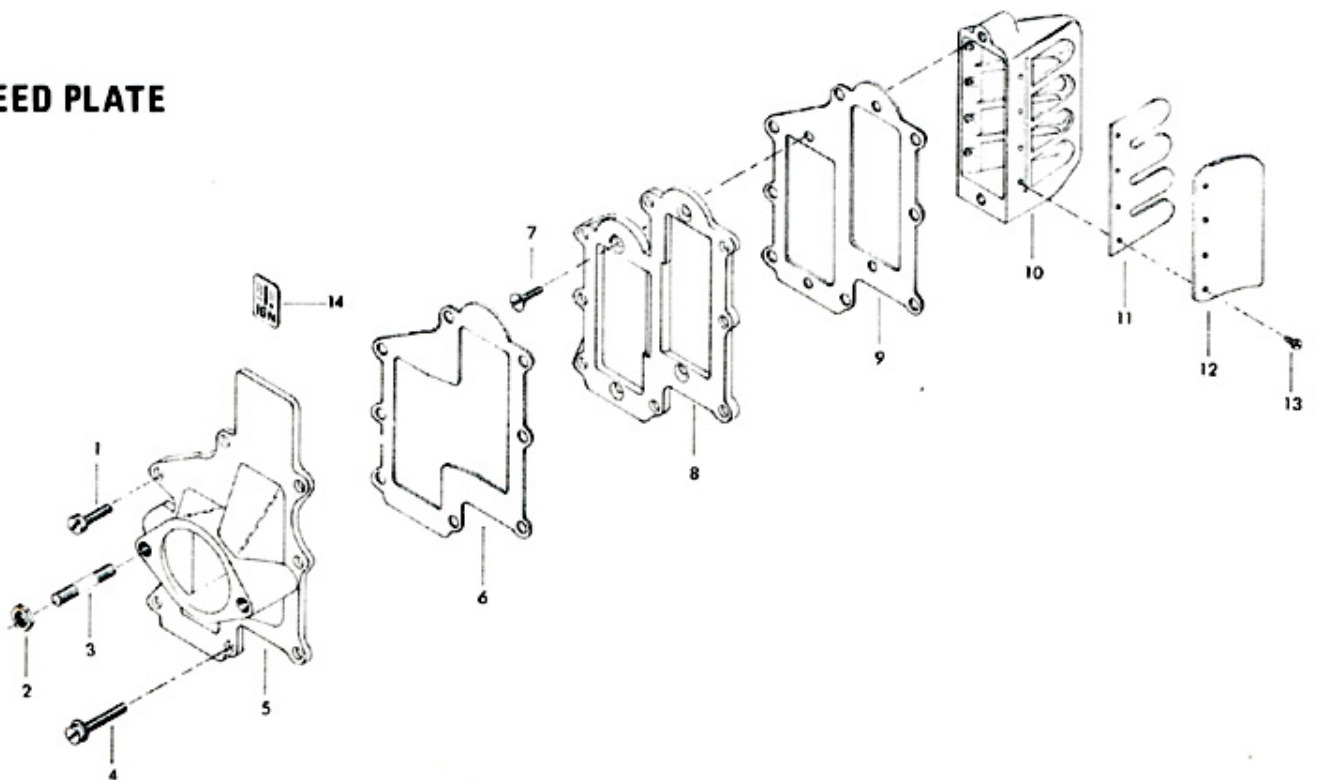
ILLUS. NO.	PART NO.	QTY.	DESCRIPTION
1	A353260	1	Piston ring set (6 per set)
2	377015	2	Piston
3	40017-2	2	Piston pin
4	S366016-3	2	Connecting rod w/cap and screws
5	85634-1	4	Connecting rod screw
6	A85228	3	Bearing cage w/rollers (16 per set)
7	40146-1	2	Crankshaft seal
8	90014	1	Crankshaft lower main bearing
9	A433018	1	Crankshaft w/bearing
10	A40655	1	Crankshaft center main bearing w/snap ring
11	40410	1	Snap ring
12	366277	1	Bearing cage gasket
13	2A366144	1	Crankshaft bearing cage w/seal and gasket
	A433144	1	Crankshaft bearing cage w/seal (uses pan hd screws)
14	1948	4	Flat hd screw, 1/4 - 20 x 7/8
	1441	4	Pan hd screw, 1/4 - 20 x 7/8
	8060	4	External tooth lockwasher (use with pan hd screw)
15	366082	1	Magneto stator ring
16	1812	2	Fill hd screw w/lockwasher, 10 - 24 x 1 9/16
17	1080	1	Fill hd screw w/lockwasher, 10 - 24 x 3/4
18	1813	1	Fill hd screw w/lockwasher, 10 - 24 x 1 1/8
19	335217	2	Piston pin bearing
20	90096	4	Piston pin retainer
21	366215	4	Spacer
22		1	Crankshaft thrust bearing upper, not sold separately. Contact area service manager for authorization to return crankshaft for bearing replacement.

Reed Plate

ILLUS. NO.	PART NO.	QTY.	DESCRIPTION
1	1240	4	Hex hd screw, 1/4 - 20 x 7/8
2	1515	2	Hex nut, 5/16 - 18
3	40209	2	Carburetor stud
4	1240	4	Hex hd screw, 1/4 - 20 x 7/8
5	A433167	1	Carburetor adapter flange
6	433168	1	Carburetor adapter gasket
7	1141	4	Flat hd screw, 10 - 24 x 1/2
8	433404	1	Deflector plate
9	433406	1	Deflector plate gasket
10	A433158	2	Reed plate w/reeds, stops and screws
11	335160	4	Reed
12	88161-3	4	Reed stop
13	1298	16	Round hd screw w/lockwasher, 6 - 32 x 1/4
14	A452387	1	Decal, timing

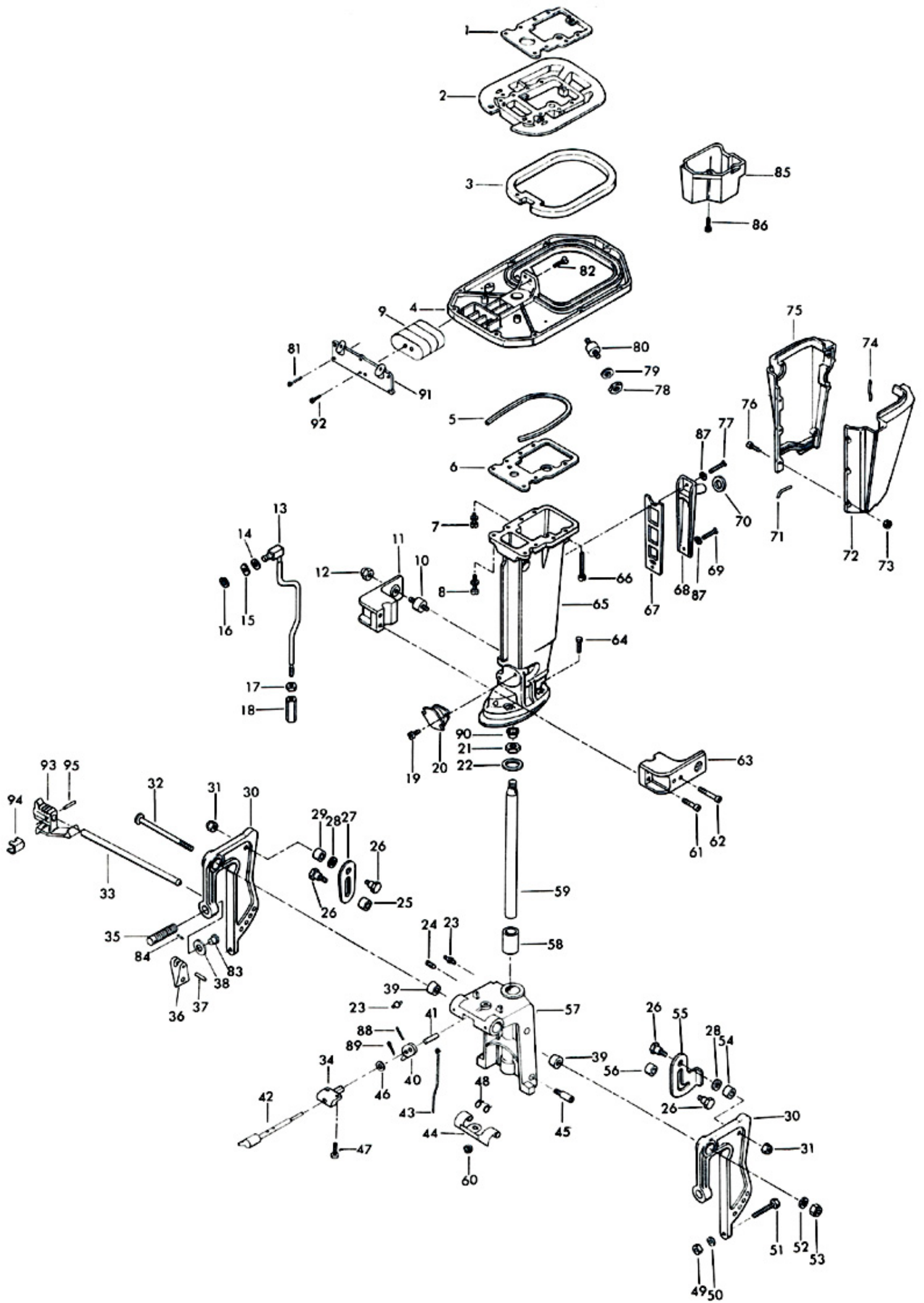


REED PLATE



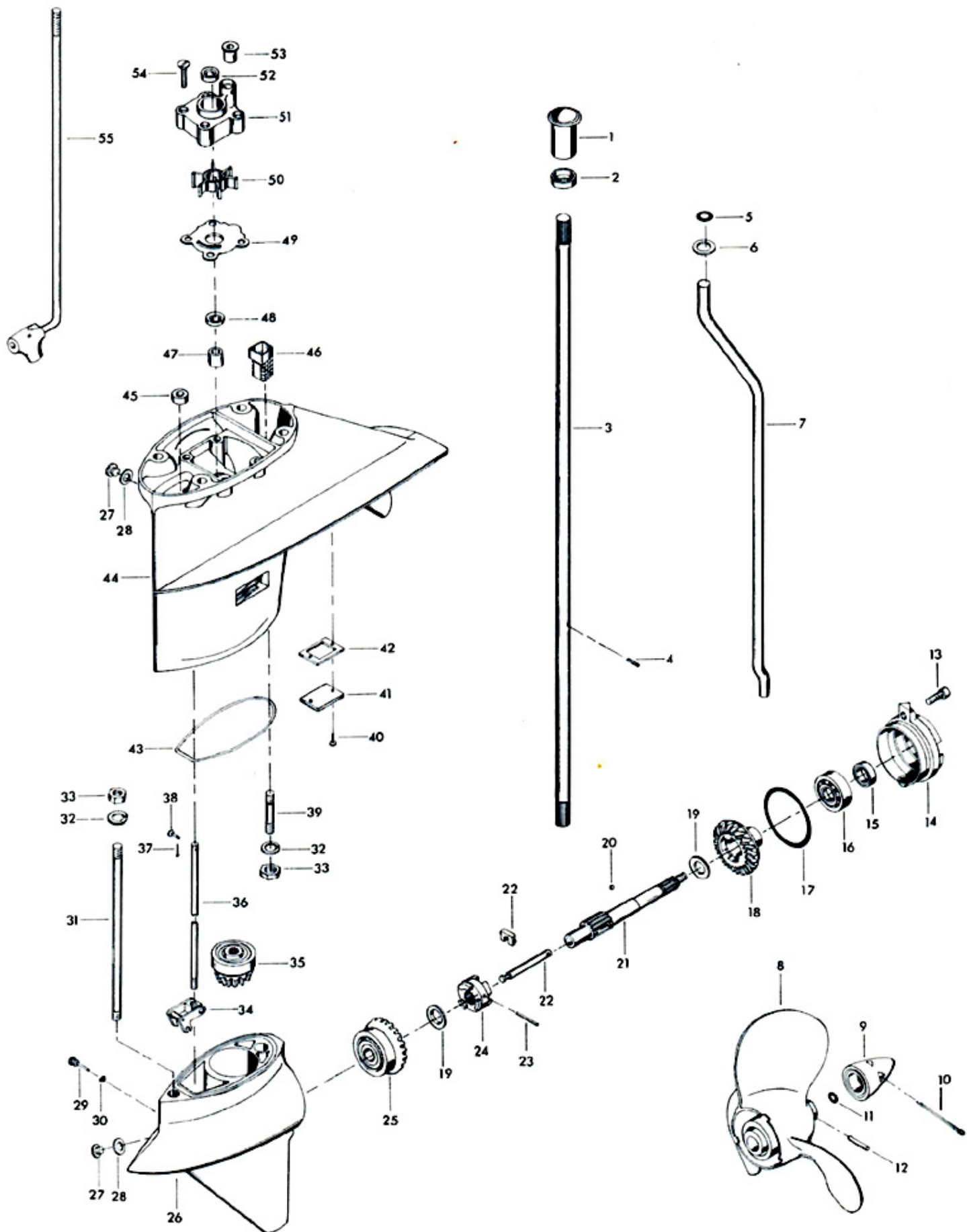
Motor Leg

ILLUS. NO.	PART NO.	QTY.	DESCRIPTION	ILLUS. NO.	PART NO.	CTY.	DESCRIPTION
1	307279-2	1	Gasket, cylinder exhaust upper	49	1346	2	Hex nut, S.S., 3/8 - 16
2	433680	1	Spacer plate	50	1904	2	Plain washer
3	307989-1	1	Seal, kingpin plate	51	1593	2	Hex hd screw, S.S., 3/8 - 16 x 3
4	S307940	1	Kingpin plate	52	1656	1	Plain washer
5	89025	1	Dampening pad	53	7001	1	Elastic stop nut
6	307453-3	1	Gasket, cylinder exhaust lower	54	269929	1	Spacer, tilt stop
7	1946	2	Flanged 12 pt. screw, 5/16 - 18 x 1 3/4	55	366426	1	Tilt stop, port
8	1947	6	Flanged 12 pt. screw, 5/16 - 18 x 2	56	269929	1	Spacer, tilt stop
9	203965	1	Shock mount upper	57	A367072-1	1	Swivel bracket w/bearings and grease fitting
10	215962	2	Shock mount side lower	58	191169-1	2	Swivel bracket bearing
11	433972	1	Shock mount lower cover, starboard	59	A433019	1	Kingpin w/welch plug
12	1326	2	Acorn nut, S.S., 5/16 - 18	60	1669	1	Stop nut
13	307615	1	Gear shift rod upper	61	1636	2	Hex socket hd cap screw, S.S., 3/8 - 16 x 1 1/4
14	1987	1	Plain washer	62	1635	2	Hex socket hd cap screw, S.S., 3/8 - 16 x 3 1/2
15	8049	1	Bowed spring washer	63	433973	1	Shock mount lower cover, port
16	185764	1	Retainer ring	64	1929	4	Hex hd cap screw, S.S., 3/8 - 16 x 1 9/16
17	1349	1	Hex nut, S.S., 5/16 - 18	65	366133-1	1	Motor leg
18	141704	1	Gear shift rod coupling	66	1905	1	Fill hd screw, 1/4 - 20 x 7/16
19	1129	4	Fill hd screw, S.S., 5/16 - 18 x 1/2	67	40833-4	1	Motor leg exhaust cover gasket
20	183346	1	Shock mount lower	68	89832-2	1	Motor leg exhaust cover
21	84280	1	Kingpin nut	69	1199	1	Hex hd screw, 1/4 - 20 x 1
22	89011	1	Swivel bracket washer	70	89504	1	Grommet, motor leg exhaust cover
23	213274	3	Grease fitting	71	89323	2	Packing, leg cover lower
24	1817	1	Socket hd set screw, oval point, 5/16 - 18 x 5/16	72	89135-4	1	Motor leg cover, port
25	269929	1	Spacer, tilt stop	73	1473	6	Hex nut, 10 - 24
26	366350	4	Tilt stop pivot	74	89323	2	Packing, leg cover upper
27	366433	1	Tilt stop, starboard	75	89145-4	1	Motor leg cover, starboard
28	1666	2	Bowed spring washer	76	1088	6	Fill hd screw, 10 - 24 x 9/16
29	269929	1	Spacer, tilt stop	77	1849	1	Hex hd screw, S.S., 1/4 - 20 x 1 3/8
30	S433032	2	Stern bracket w/clamp screw and foot	78	1346	2	Hex nut, 3/8 - 16
31	7007	4	Hex nut	79	8038	2	Plain washer
32	366037	1	Stern bracket pivot bolt	80	307962	2	Shock mount
33	A433113	1	Stern bracket lock bar w/handle	81	1502	5	Hex cap screw, 1/4 - 20 x 5/8
34	366884	1	Bearing	82	1160	2	Flat hd screw, 1/4 - 28 x 5/8
35	A338073	2	Clamp screw w/foot	83	66480	2	Stud
36	53075-1	2	Clamp screw handle	84	8537	2	Spring pin
37	1638	2	Spring pin	85	307660-1	1	Tube, leg exhaust
38	24074	2	Screw foot	86	1851	3	Fill hd screw w/lockwasher, 10 - 24 x 1/2
39	366286	2	Stern bracket friction washer	87	8083	2	Spring lockwasher
40	366364	1	Arm, reverse lock	88	1836	1	Spring pin
41	369884	1	Bearing, reverse lock shaft	89	1014	1	Cotter pin
42	366827	1	Handle and shaft	90	1880	1	Plastic plug
43	366510	1	Link, reverse lock	91	433946	1	Cover, shock mount upper
44	366349	1	Reverse lock	92	1211	2	Hex hd screw w/spring lockwasher, 1/4 - 28 x 5/8
45	366886	2	Pin, reverse lock	93	433114	1	Handle, lock bar
46	8094	1	Plain washer	94	286461	1	Spring, lock bar handle
47	1733	2	Pan hd screw, 10 - 24 x 9/16	95	1744	1	Spring pin
48	366300	2	Reverse lock spring		452390	1	Decal, reverse lock (not shown)



Gear Housing

ILLUS. NO.	PART NO.	QTY.	DESCRIPTION
1	338129-1	1	Boot
2	338271	1	Retainer
3	A191128-1	1	Driveshaft
4	901563	1	Drive pin, water pump impeller
5	40342	1	Seal
6	8042	1	Plain washer
7	141244	1	Inlet water line
8	P287	1	Propeller (Accessory Item)
9	A94094-1	1	Propeller nut w/seal and cotter pin
10	1027	1	Cotter pin, S.S., 1/8 - 1/2
11	40342	1	Seal, propeller nut
12	K-247	1	Propeller pin, pack of 6 w/cotter pin
13	1263	2	Hex socket hd cap screw, S.S., 5/16 - 18 x 9/16
14	2A366298	1	Propeller shaft bearing cage w/seal
15	141118	1	Seal, propeller shaft
16	366058	1	Ball bearing, propeller shaft
17	141305	1	Seal, propeller shaft bearing cage
18	A99662	1	Bevel gear rear w/bushing
19	40717	2	Thrust washer, bevel gear
20	366727	1	Ball, propeller shaft
21	A287098-2	1	Propeller shaft
22	A90871-2	1	Gear shift arm pin w/yoke
23	8568	1	Spring pin
24	99521-1	1	Clutch
25	A99023	1	Bevel gear front w/bearing
26	A435054	1	Gear housing lower w/plug, washer and thrust bearing cup
27	50109	2	Plug, gear housing
28	8077	2	Washer, gear housing plug
29	90891	1	Gear shift arm pin
30	8001	1	Lyltite washer
31	97008-1	1	Stud, long
32	8065	6	Lockwasher
33	1346	2	Hex nut, S.S., 3/8 - 16
34	A435621	1	Gear shift arm
35	2A435266	1	Bevel pinion w/bearing
36	435705	1	Gear shift rod lower
37	1015	1	Cotter pin
38	85372	1	Pin, gear shift rod lower
39	40008	1	Stud, short
40	1733	2	Pan hd screw, 10 - 24 x 9/16
41	435706	1	Cover, gear housing upper
42	435830	1	Gasket, gear housing upper cover
43	435555	1	Seal, gear housing
44	A435554	1	Gear housing upper w/seal, washer, plug and inlet water tube
45	338618-1	1	Seal, shift rod lower
46	435077	1	Screen, water inlet
47	435057	1	Bearing, driveshaft upper
48	40307-2	1	Seal, driveshaft
49	435562	1	Water pump back plate
50	433065	1	Water pump impeller
51	A341060	1	Water pump body
52	349307	1	Driveshaft seal
53	93914	1	Seal, inlet water line, lower
54	1149	4	Flat hd screw, S.S., 1/4 - 20 x 1 1/4
55	A434616	1	Gear shift rod intermediate



Fuel Pump, Fuel Tank and Line

ILLUS. NO.	PART NO.	QTY.	DESCRIPTION
1	433754	1	Fuel line, pump to carburetor
2	2706772	2	Fuel line clamp
3	40314-1	1	Elbow
4	A89650	1	Fuel sediment bail and nut
5	89500	1	Fuel sediment bowl
6	84617	1	Fuel sediment bowl gasket
7	84653	1	Fuel sediment bowl screen
8	A177431-2	1	Fuel pump body w/valves
9	1578	1	Hex slot hd screw, 1/4 - 20 x 7/8
10	1156	1	Flat hd screw, 1/4 - 20 x 1/2
11	1481	2	Hex hd screw, 1/4 - 20 x 9/16
12	201432	1	Fuel pump mounting bracket
13	89758	2	Fuel pump air hose
14	84314-1	3	Elbow
15	1050	6	Fill hd screw, 10 - 24 x 1
16	84746	1	Fuel pump cover
17	S84747	1	Fuel pump diaphragm w/gasket
18	84760-1	1	Fuel pump gasket
19	1860	2	Rd hd screw, 6 - 32 x 1/4
20	177330	3	Fuel pump valve
21	84792	3	Fuel pump valve gasket
22	97772	1	Fuel line clamp
23	A197752-1	1	Fuel line long w/clamps
24	298788	3	Ferrule
26	S387766-1	1	Fuel line prime bulb
27	A84754-1	1	Fuel line w/clamps
28	197787-2	1	Fuel line coupler
29	213735	1	Seal, fuel line coupler (small)
30	213342	1	Seal, fuel line coupler (large)
31	311755-2	1	Fuel tank adapter
32	9273	1	Fuel tank (Accessory Item)
33	213251	1	Fuel tank gauge cap
	224394-3	1	Decal, fuel mixture (not shown)